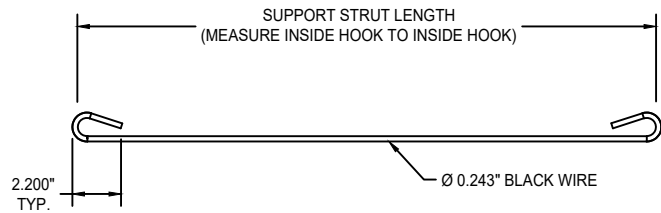
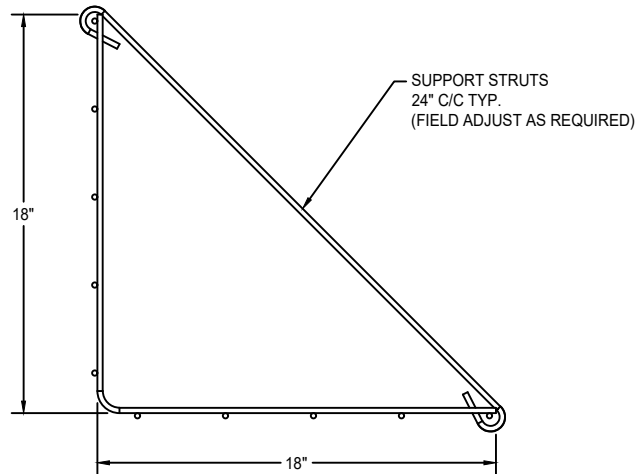


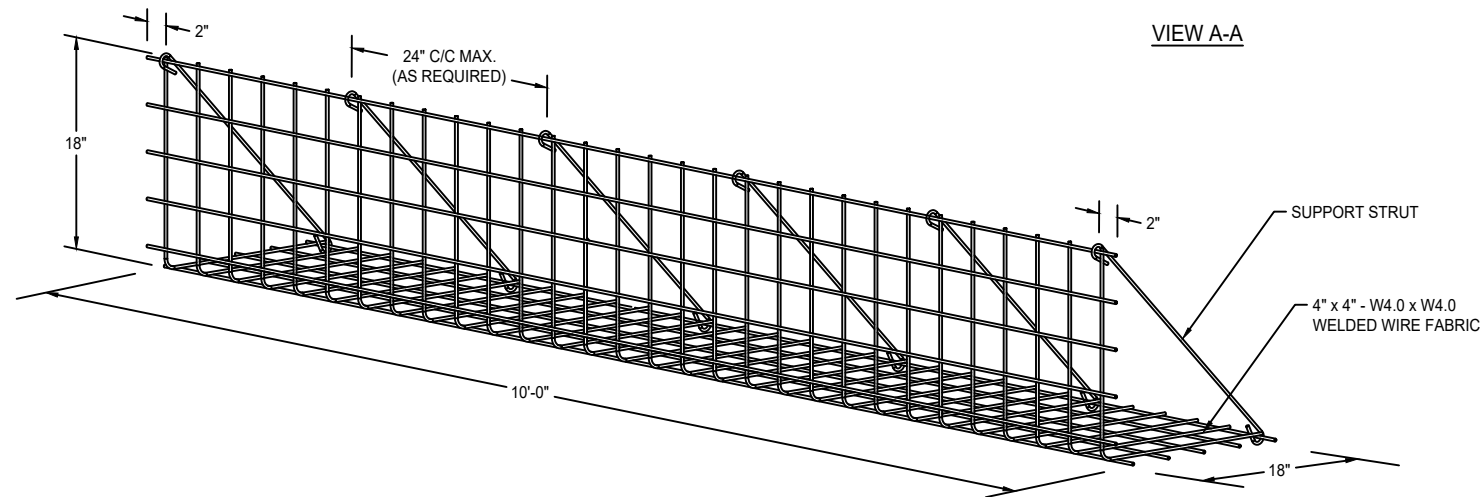
Plotted on: June 11, 2020  
K:\CAD\DETAILS\WWF\WWF STANDARD DETAILS.DWG



**SUPPORT STRUT**

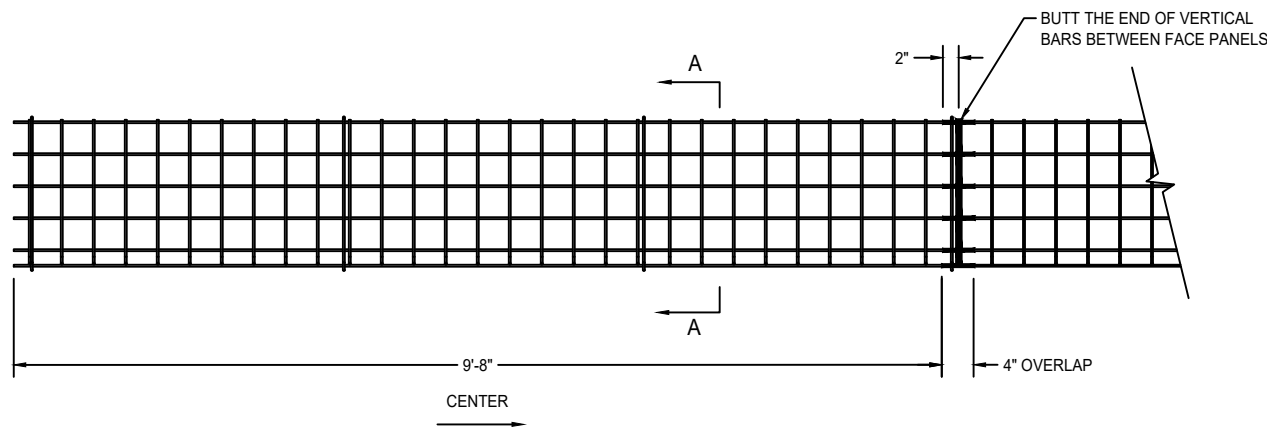


**VIEW A-A**



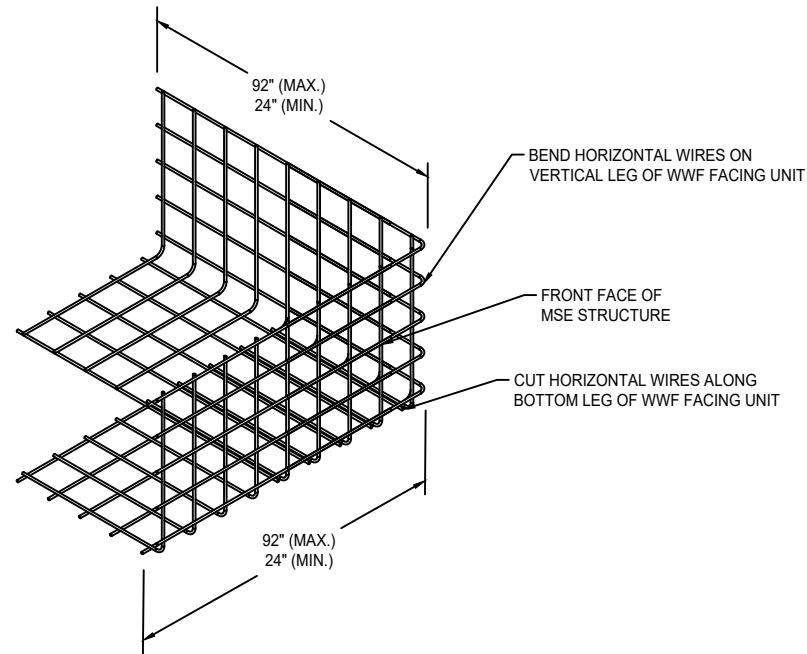
**NOTES:**

1. FACING TO CONSIST OF PREFABRICATED WWF 4" x 4" - W4.0 x W4.0 FORMS.
2. ALL FORMS AND STRUTS WILL BE FABRICATED WITH BLACK WIRE.
3. OVERALL LENGTH OF WIRE FORMS IS 10'-0". EFFECTIVE CONSTRUCTED WIDTH IS 9'-8" WITH 4" OVERLAPPING AT ENDS.



**WELDED WIRE FORM FACING UNIT**

NOT TO SCALE

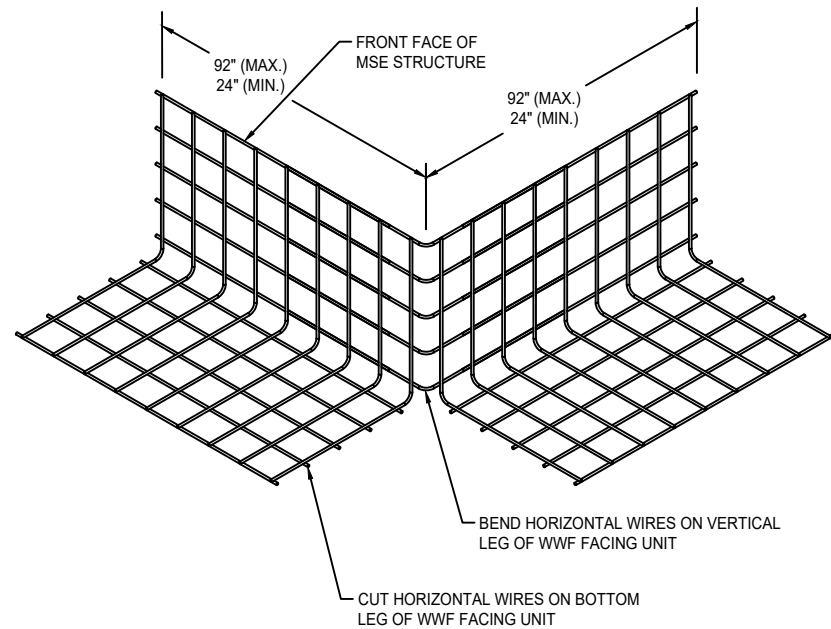


**NOTES:**

1. MAINTAIN 24" (MIN.) OF WIRE FORM ON EACH SIDE OF BEND.
2. SEE WELDED WIRE FORM (WWF) FACING UNIT DETAIL FOR FACING MATERIAL AND DIMENSIONS.

**WELDED WIRE FORM OUTSIDE CORNER UNIT**

NOT TO SCALE



**NOTES:**

1. MAINTAIN 24" (MIN.) OF WIRE FORM ON EACH SIDE OF BEND.
2. SEE WELDED WIRE FORM (WWF) FACING UNIT DETAIL FOR FACING MATERIAL AND DIMENSIONS.

**WELDED WIRE FORM INSIDE CORNER UNIT**

NOT TO SCALE

**Tensar.**

Tensar International Corporation  
2500 Northwinds Parkway | Suite 500  
Alpharetta, Georgia 30009 | 770-344-2090

THIS DESIGN IS BASED UPON SPECIFIC PROPERTIES OF THOSE SPECIFIC TENSAR PRODUCTS INCORPORATED THEREIN WHICH ARE PROPRIETARY TO TENSAR. ANY SUBSTITUTION OF THE SPECIFIED PRODUCTS WILL INVALIDATE THIS DESIGN. THIS DRAWING IS BEING FURNISHED FOR USE ON THIS SPECIFIC PROJECT ONLY. ANY PARTY ACCEPTING THIS DOCUMENT DOES SO IN CONFIDENCE AND AGREES THAT IT SHALL NOT BE DUPLICATED WHOLE OR IN PART, NOR DISCLOSED TO OTHERS, WITHOUT THE CONSENT OF TENSAR INTERNATIONAL CORPORATION.

© 2020, TENSAR INTERNATIONAL CORPORATION

PROJECT NAME AND LOCATION

**TIC STANDARD DETAILS**

OWNER

OWNER PROJECT No.

CLIENT

TIC PROJECT No.

DRAWN BY: O. MARTINEZ

DESIGNED BY:

CHECKED BY: R. JOHNSON

ENGINEER OF RECORD (MSE STRUCTURE ONLY):

06/11/20 ISSUED FOR REVIEW RJ

NO. DATE DESCRIPTION BY

REVISION / ISSUE

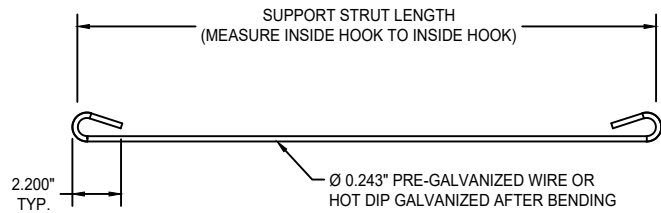
SHEET TITLE

**WWF STANDARD DETAILS**

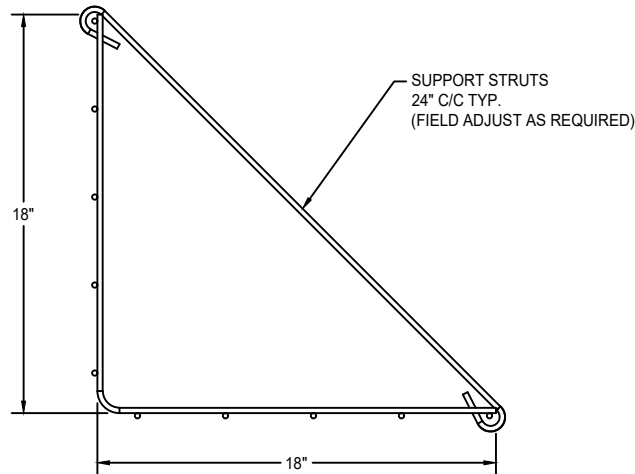
SCALE: AS SHOWN

SHEET 1 OF

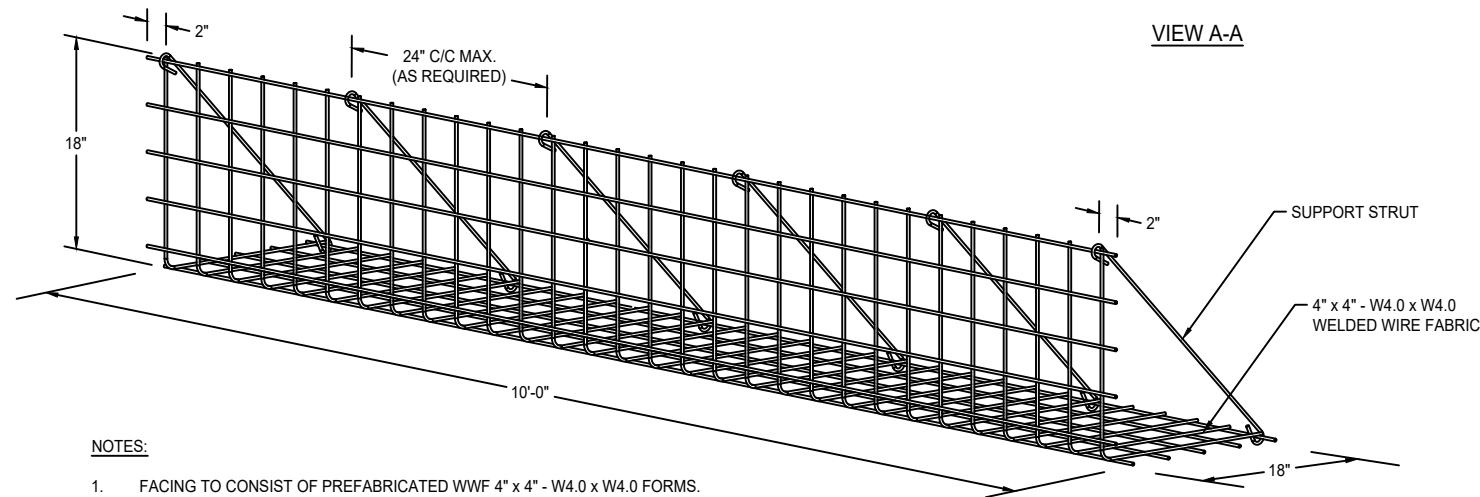
Plotted on: June 11, 2020  
K:\CAD\DETAILS\WWF\WWF STANDARD DETAILS.DWG



SUPPORT STRUT

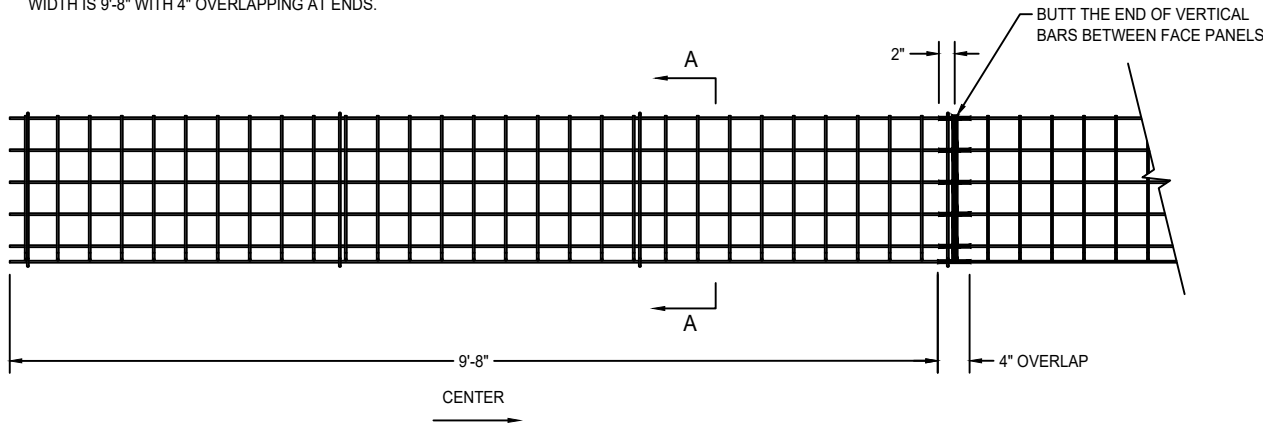


VIEW A-A



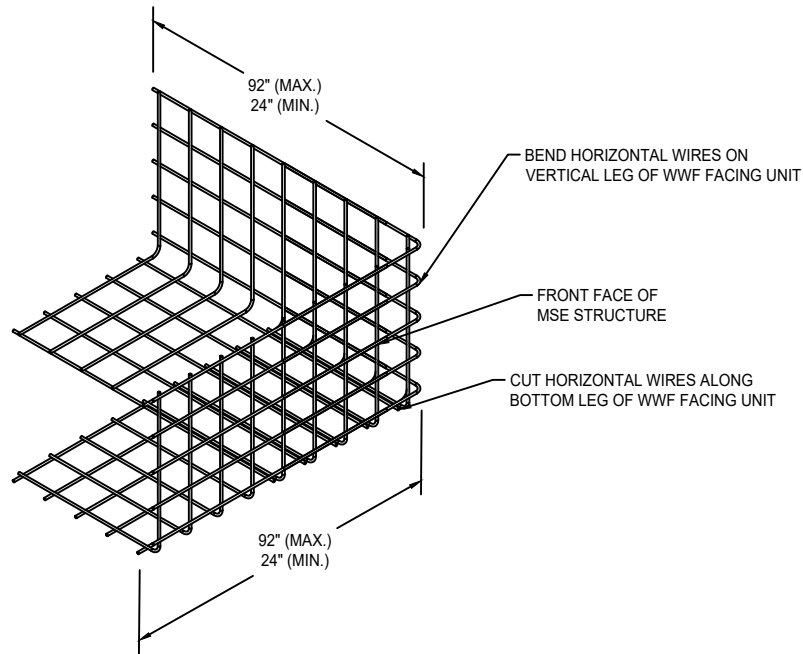
NOTES:

- FACING TO CONSIST OF PREFABRICATED WWF 4" x 4" - W4.0 x W4.0 FORMS.
- WWF'S ARE MANUFACTURED OF ASTM A82 (AASHTO M32) STEEL WIRE AND ARE WELDED IN ACCORDANCE WITH ASTM A185 (AASHTO M55).
- ALL FORMS SHALL BE HOT DIP GALVANIZED AFTER BENDING IN ACCORDANCE WITH ASTM A123 (AASHTO M111).
- STRUTS ARE MANUFACTURED OF MEDIUM TEMPER PRE-GALVANIZED WIRE, IN ACCORDANCE WITH ASTM A641 OR ARE HOT-DIP GALVANIZED AFTER BENDING IN ACCORDANCE WITH ASTM A153 (AASHTO M232).
- OVERALL LENGTH OF WIRE FORMS IS 10'-0". EFFECTIVE CONSTRUCTED WIDTH IS 9'-8" WITH 4" OVERLAPPING AT ENDS.



WELDED WIRE FORM FACING UNIT

NOT TO SCALE

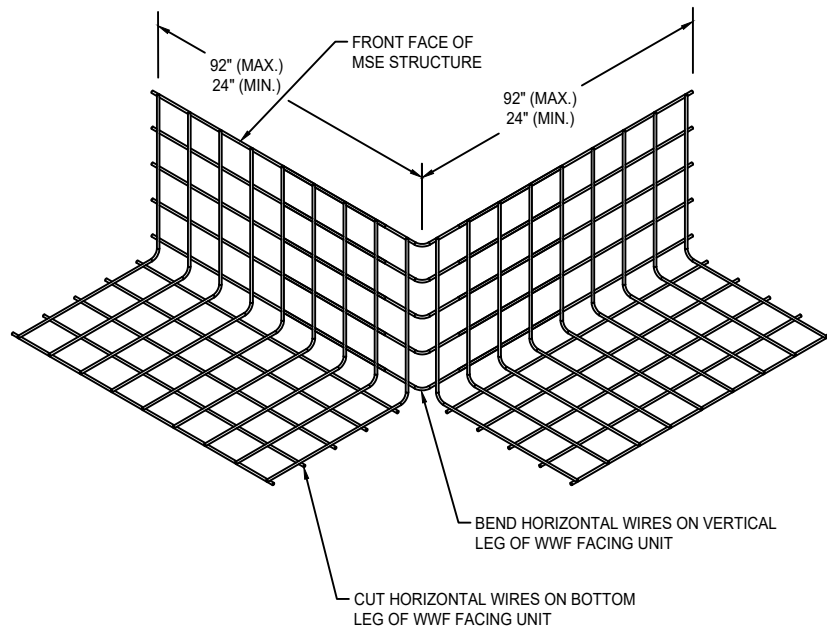


NOTES:

- MAINTAIN 24" (MIN.) OF WIRE FORM ON EACH SIDE OF BEND.
- SEE WELDED WIRE FORM (WWF) FACING UNIT DETAIL FOR FACING MATERIAL AND DIMENSIONS.

WELDED WIRE FORM OUTSIDE CORNER UNIT

NOT TO SCALE



NOTES:

- MAINTAIN 24" (MIN.) OF WIRE FORM ON EACH SIDE OF BEND.
- SEE WELDED WIRE FORM (WWF) FACING UNIT DETAIL FOR FACING MATERIAL AND DIMENSIONS.

WELDED WIRE FORM INSIDE CORNER UNIT

NOT TO SCALE

**Tensar.**

Tensar International Corporation  
2500 Northwinds Parkway | Suite 500  
Alpharetta, Georgia 30009 | 770-344-2090

THIS DESIGN IS BASED UPON SPECIFIC PROPERTIES OF THOSE SPECIFIC TENSAR PRODUCTS INCORPORATED THEREIN WHICH ARE PROPRIETARY TO TENSAR. ANY SUBSTITUTION OF THE SPECIFIED PRODUCTS WILL INVALIDATE THIS DESIGN. THIS DRAWING IS BEING FURNISHED FOR USE ON THIS SPECIFIC PROJECT ONLY. ANY PARTY ACCEPTING THIS DOCUMENT DOES SO IN CONFIDENCE AND AGREES THAT IT SHALL NOT BE DUPLICATED WHOLE OR IN PART, NOR DISCLOSED TO OTHERS, WITHOUT THE CONSENT OF TENSAR INTERNATIONAL CORPORATION.

© 2020, TENSAR INTERNATIONAL CORPORATION

PROJECT NAME AND LOCATION

**TIC STANDARD DETAILS**

OWNER

OWNER PROJECT No.

CLIENT

TIC PROJECT No.

DRAWN BY: O. MARTINEZ

DESIGNED BY:

CHECKED BY: R. JOHNSON

ENGINEER OF RECORD (MSE STRUCTURE ONLY):

06/11/20 ISSUED FOR REVIEW RJ

NO. DATE DESCRIPTION BY

REVISION / ISSUE

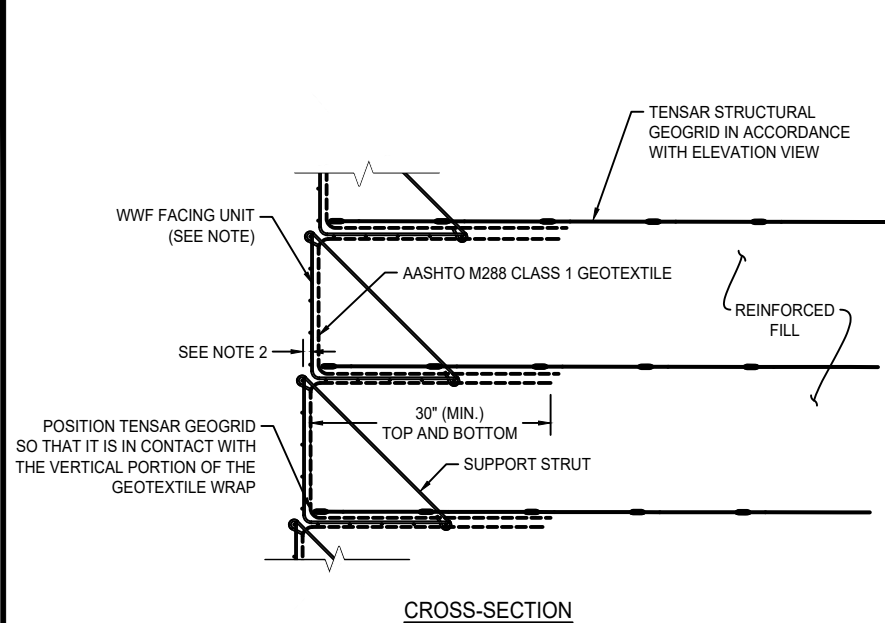
SHEET TITLE

**WWF STANDARD DETAILS**

SCALE: AS SHOWN

SHEET 2 OF

Plotted on: June 11, 2020  
K:\CAD\DETAILS\WWF\WWF STANDARD DETAILS.DWG



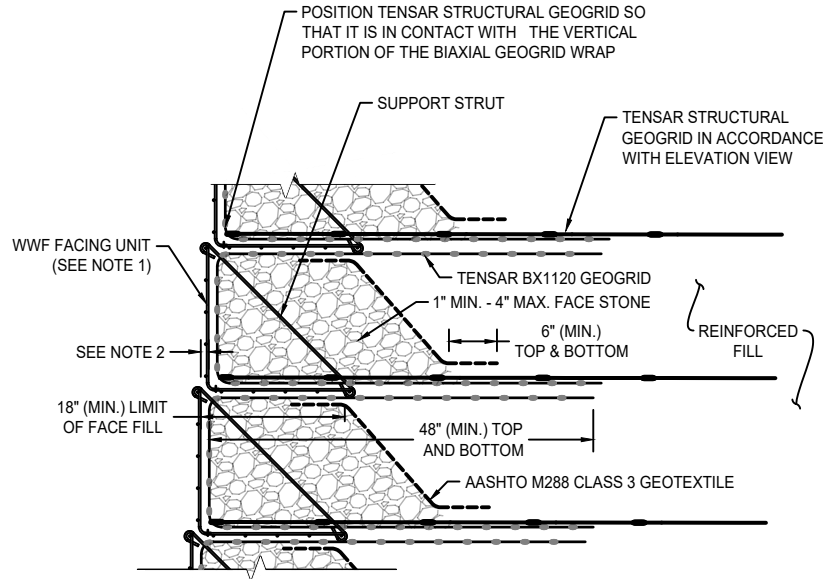
CROSS-SECTION

NOTE:

1. SEE WELDED WIRE FORM (WWF) FACING UNIT DETAIL FOR FACING MATERIAL AND DIMENSIONS.
2. OFFSET AS NEEDED TO ACHIEVE OVERALL BATTER AS SHOWN IN THE CROSS-SECTIONS.

**TEMPORARY WELDED WIRE FORM  
FACING DETAIL (GEOTEXTILE WRAP)**

NOT TO SCALE



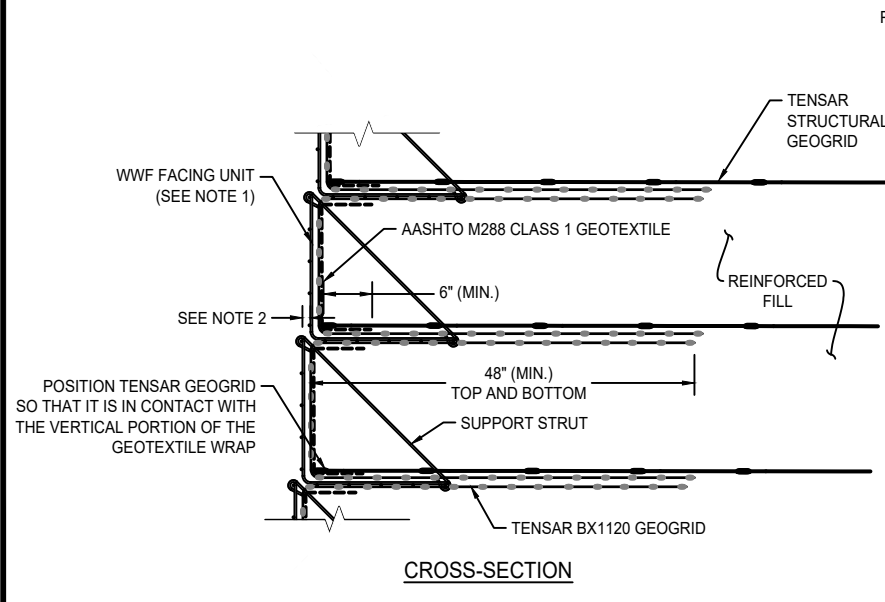
CROSS-SECTION

NOTE:

1. SEE WELDED WIRE FORM (WWF) FACING UNIT DETAIL FOR FACING MATERIAL AND DIMENSIONS.
2. OFFSET AS NEEDED TO ACHIEVE OVERALL BATTER AS SHOWN IN THE CROSS-SECTIONS.

**PERMANENT WELDED WIRE FORM FACING DETAIL**

NOT TO SCALE



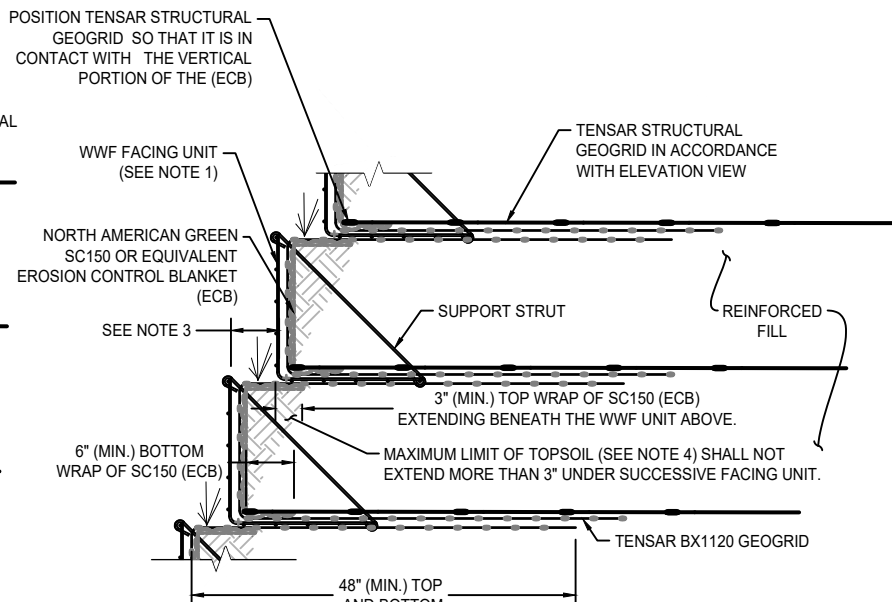
CROSS-SECTION

NOTE:

1. SEE WELDED WIRE FORM (WWF) FACING UNIT DETAIL FOR FACING MATERIAL AND DIMENSIONS.
2. OFFSET AS NEEDED TO ACHIEVE OVERALL BATTER AS SHOWN IN THE CROSS-SECTIONS.

**TEMPORARY WELDED WIRE FORM  
FACING DETAIL (BX WRAP)**

NOT TO SCALE



CROSS-SECTION

NOTES:

1. SEE WELDED WIRE FORM (WWF) FACING UNIT DETAIL FOR FACING MATERIAL AND DIMENSIONS.
2. ALL FACING UNITS SHALL BE FABRICATED FROM BLACK STEEL.
3. OFFSET VARIES (6" MIN.) AS NEEDED TO ACHIEVE OVERALL BATTER AS SHOWN IN THE CROSS-SECTIONS.
4. TOPSOIL SHALL BE LOAMY SAND OR FINER GRADATION WITH 10% - 15% ORGANIC CONTENT OR MATERIAL APPROVED BY A QUALIFIED LANDSCAPE ARCHITECT. HYDROSEEDING ON TOP OF EROSION CONTROL PRODUCT MAY RESULT IN POOR VEGETATION ESTABLISHMENT. VEGETATION TYPE SHALL BE SPECIFIED BY A QUALIFIED LANDSCAPE ARCHITECT.

**WELDED WIRE FORM FACING DETAIL (PLANTABLE FACE FILL)**

NOT TO SCALE

**Tensar.**

Tensar International Corporation  
2500 Northwinds Parkway | Suite 500  
Alpharetta, Georgia 30009 | 770-344-2090

THIS DESIGN IS BASED UPON SPECIFIC PROPERTIES OF THOSE SPECIFIC TENSAR PRODUCTS INCORPORATED THEREIN WHICH ARE PROPRIETARY TO TENSAR. ANY SUBSTITUTION OF THE SPECIFIED PRODUCTS WILL INVALIDATE THIS DESIGN. THIS DRAWING IS BEING FURNISHED FOR USE ON THIS SPECIFIC PROJECT ONLY. ANY PARTY ACCEPTING THIS DOCUMENT DOES SO IN CONFIDENCE AND AGREES THAT IT SHALL NOT BE DUPLICATED WHOLE OR IN PART, NOR DISCLOSED TO OTHERS, WITHOUT THE CONSENT OF TENSAR INTERNATIONAL CORPORATION.

© 2020, TENSAR INTERNATIONAL CORPORATION

PROJECT NAME AND LOCATION

**TIC STANDARD DETAILS**

OWNER	----
OWNER PROJECT No.	----
CLIENT	----- ----- ----- -----
TIC PROJECT No.	----

DRAWN BY:	<u>O. MARTINEZ</u>
DESIGNED BY:	----
CHECKED BY:	<u>R. JOHNSON</u>
ENGINEER OF RECORD (MSE STRUCTURE ONLY):	-----

NO.	DATE	DESCRIPTION	BY
0	06/11/20	ISSUED FOR REVIEW	RJ

REVISION / ISSUE

SHEET TITLE

**WWF STANDARD DETAILS**

SCALE: AS SHOWN

SHEET 3 OF ----

Tensar.

Tensar International Corporation  
2500 Northwinds Parkway | Suite 500  
Alpharetta, Georgia 30009 | 770-344-2090

THIS DESIGN IS BASED UPON SPECIFIC PROPERTIES OF THOSE SPECIFIC TENSAR PRODUCTS INCORPORATED THEREIN WHICH ARE PROPRIETARY TO TENSAR. ANY SUBSTITUTION OF THE SPECIFIED PRODUCTS WILL INVALIDATE THIS DESIGN. THIS DRAWING IS BEING FURNISHED FOR USE ON THIS SPECIFIC PROJECT ONLY. ANY PARTY ACCEPTING THIS DOCUMENT DOES SO IN CONFIDENCE AND AGREES THAT IT SHALL NOT BE DUPLICATED WHOLE OR IN PART, NOR DISCLOSED TO OTHERS, WITHOUT THE CONSENT OF TENSAR INTERNATIONAL CORPORATION.

© 2020, TENSAR INTERNATIONAL CORPORATION

PROJECT NAME AND LOCATION

TIC STANDARD DETAILS

OWNER	-----
OWNER PROJECT No.	----
CLIENT	-----
TIC PROJECT No.	----
DRAWN BY:	O. MARTINEZ
DESIGNED BY:	----
CHECKED BY:	R. JOHNSON
ENGINEER OF RECORD (MSE STRUCTURE ONLY):	-----

NO.	DATE	DESCRIPTION	BY
0	06/11/20	ISSUED FOR REVIEW	RJ

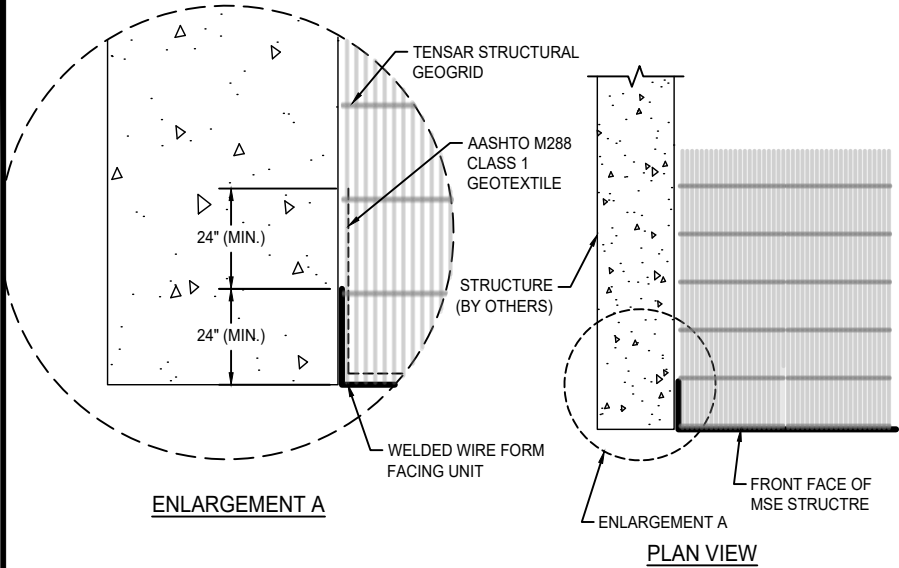
REVISION / ISSUE

SHEET TITLE

WWF STANDARD DETAILS

SCALE: AS SHOWN

SHEET 4 OF ----

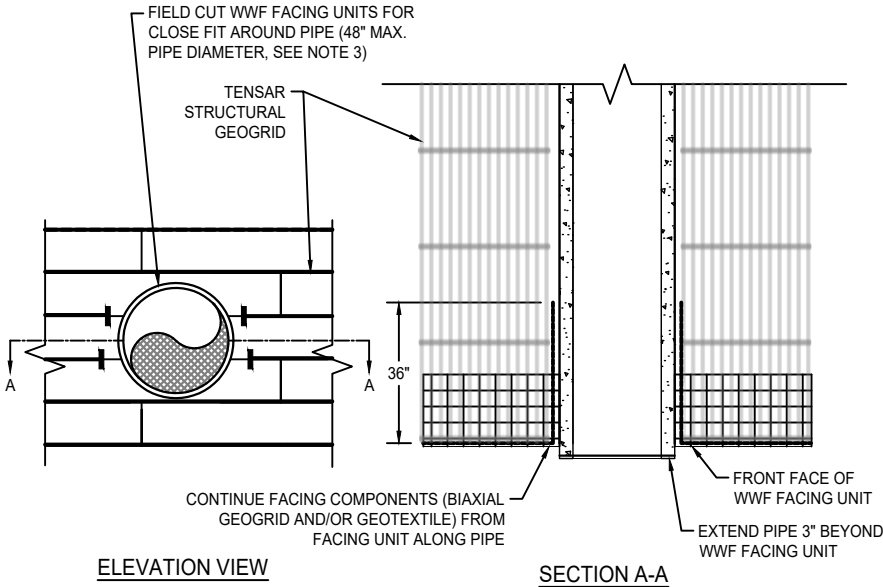


NOTES:

1. EXTEND GEOGRID AND TRIM AT FACE OF STRUCTURE.
2. BEND AND EXTEND WELDED WIRE FACING UNIT BACK 2.0' (MIN.) ALONG FACE OF STRUCTURE. EXTEND GEOTEXTILE AND BIAXIAL GEOGRID 2.0' (MIN.) ALONG FACE OF STRUCTURE PAST THE WELDED WIRE FACE EXTENSION.
3. SUPPORT STRUTS AND BIAXIAL GEOGRID NOT SHOWN FOR CLARITY.

WELDED WIRE FORM WALL TRANSITION AT STRUCTURE

NOT TO SCALE

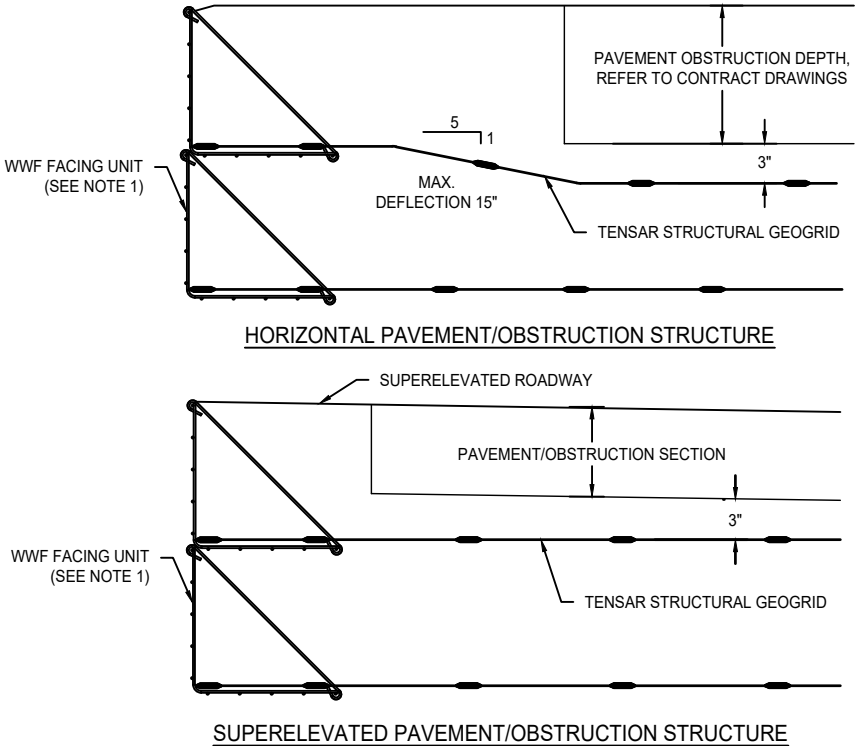


NOTES:

1. SEE WELDED WIRE FORM (WWF) FACING UNIT DETAIL FOR FACING MATERIALS AND DIMENSIONS.
2. SEE ELEVATION VIEW FOR GEOGRID TYPE, LOCATION, AND DIMENSIONS.
3. TERMINATE GEOGRIDS NO MORE THAN 3" FROM PIPE.
4. CONTRACTOR RESPONSIBLE TO INSTALL PIPE WITH LEAK-PROOF JOINTS.

PIPE PENETRATION DETAIL AT WWF WALL FACE

NOT TO SCALE



NOTES:

1. SEE WELDED WIRE FORM (WWF) FACING UNIT DETAIL FOR FACING MATERIALS AND DIMENSIONS.
2. CONTRACTOR IS RESPONSIBLE TO COORDINATE THE PLACEMENT OF THE GEOGRID TO AVOID CONFLICT WITH THE CONTRACT PAVEMENT/OBSTRUCTION SECTION. GEOGRID MUST BE SEPARATED FROM THE PAVEMENT/OBSTRUCTION SECTION BY A MINIMUM OF 3\"/>

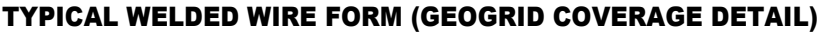
GEOGRID PLACEMENT AT PAVEMENT/OBSTRUCTION SECTION

NOT TO SCALE

Plotted on: June 11, 2020  
K:\CAD\DETAILS\WWF\WWF STANDARD DETAILS.DWG

THIS DESIGN IS BASED UPON SPECIFIC PROPERTIES OF THOSE SPECIFIC TENSAR PRODUCTS INCORPORATED THEREIN WHICH ARE PROPRIETARY TO TENSAR. ANY SUBSTITUTION OF THE SPECIFIED PRODUCTS WILL INVALIDATE THIS DESIGN. THIS DRAWING IS BEING FURNISHED FOR USE ON THIS SPECIFIC PROJECT ONLY. ANY PARTY ACCEPTING THIS DOCUMENT DOES SO IN CONFIDENCE AND AGREES THAT IT SHALL NOT BE DUPLICATED WHOLE OR IN PART, NOR DISCLOSED TO OTHERS, WITHOUT THE CONSENT OF TENSAR INTERNATIONAL CORPORATION.

© 2020, TENSAR INTERNATIONAL CORPORATION



NOT TO SCALE

PROJECT NAME AND LOCATION

## TIC STANDARD DETAILS

\_\_\_\_\_

OWNER

OWNER PROJECT No. ----

CLIENT

TIC PROJECT No. ----

DRAWN BY: O. MARTINEZDESIGNED BY:                     

CHECKED BY : R. JOHNSON

ENGINEER OF RECORD (MSE STRUCTURE ONLY):

000-00-000 000-00-000

0	06/11/20	ISSUED FOR REVIEW	RJ
NO.	DATE	DESCRIPTION	BY
REVISION / ISSUE			

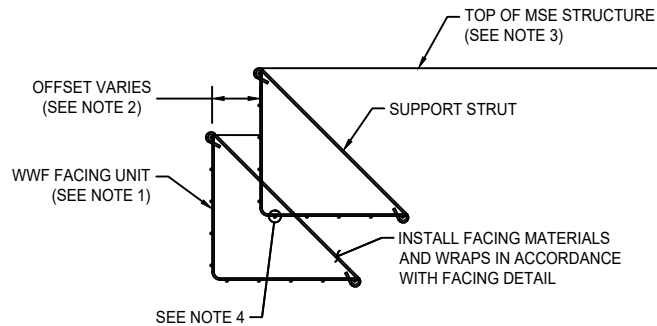
SHEET TITLE

## WWF STANDARD DETAILS

SCALE: AS SHOWN

SHEET 5 OF ---

Plotted on: June 11, 2020  
K:\CAD\DETAILS\WWF\WWF STANDARD DETAILS.DWG

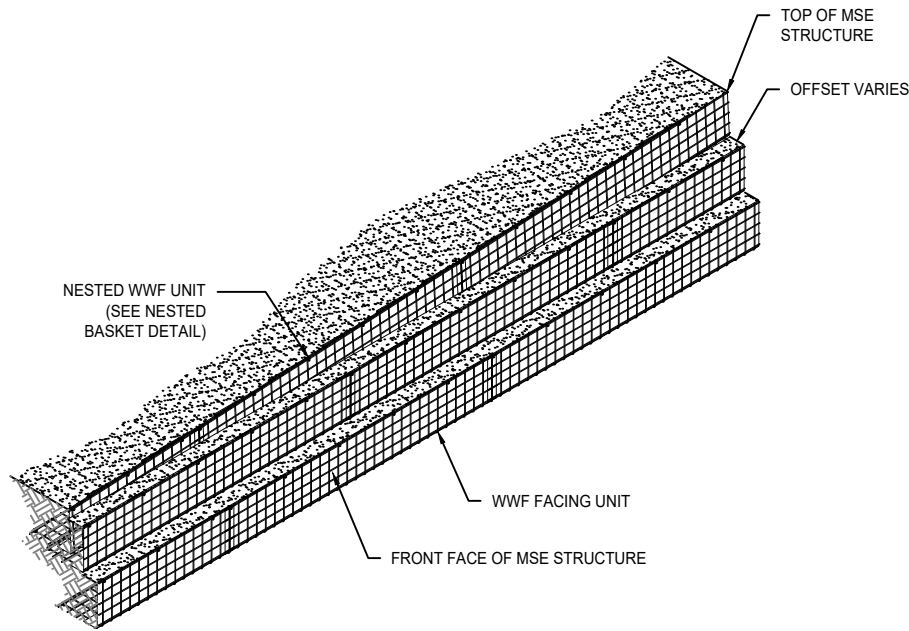


**NOTES:**

1. SEE WELDED WIRE FORM (WWF) FACING DETAIL FOR FACING MATERIALS AND DIMENSIONS.
2. OFFSET AS NEEDED TO ACHIEVE OVERALL BATTER AS SHOWN IN THE CROSS-SECTIONS.
3. SET TOPMOST WWF FACING UNIT INSIDE WWF FACING UNIT BELOW TO FOLLOW GRADE.
4. HORIZONTAL WIRES OF TOPMOST WWF FACING UNIT MAY BE CUT TO ALLOW INSTALLATION OVER STRUTS OF WWF FACING UNIT BELOW.

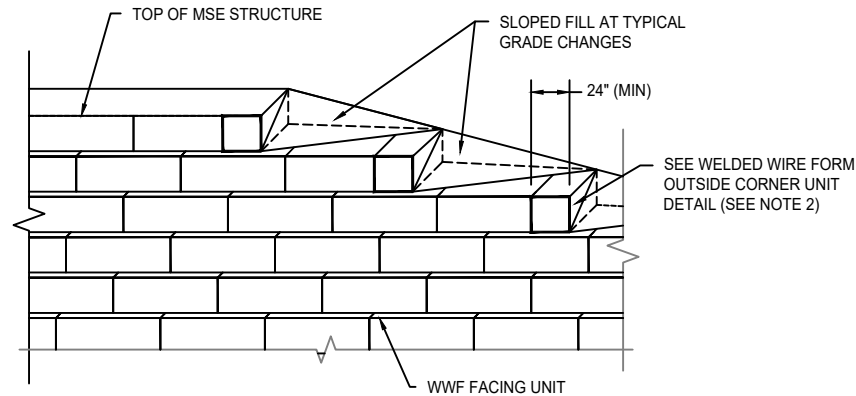
**NESTED BASKET DETAIL (OFFSET)**

NOT TO SCALE



**ISOMETRIC VIEW - NESTED BASKET AT TOP OF MSE STRUCTURE DETAIL (OFFSET)**

NOT TO SCALE

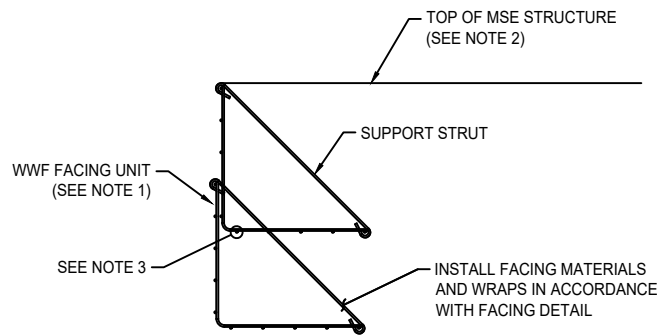


**NOTES:**

1. SEE WELDED WIRE FORM (WWF) FACING DETAIL AND WWF OUTSIDE CORNER UNIT DETAIL FOR FACING MATERIALS AND DIMENSIONS.
2. BEND BASKET 90° PER OUTSIDE CORNER UNIT DETAIL AT STEPS TO ENSURE REINFORCED FILL IS CONTAINED.

**TOP OF MSE STRUCTURE FINISHING DETAIL (OFFSET)**

NOT TO SCALE

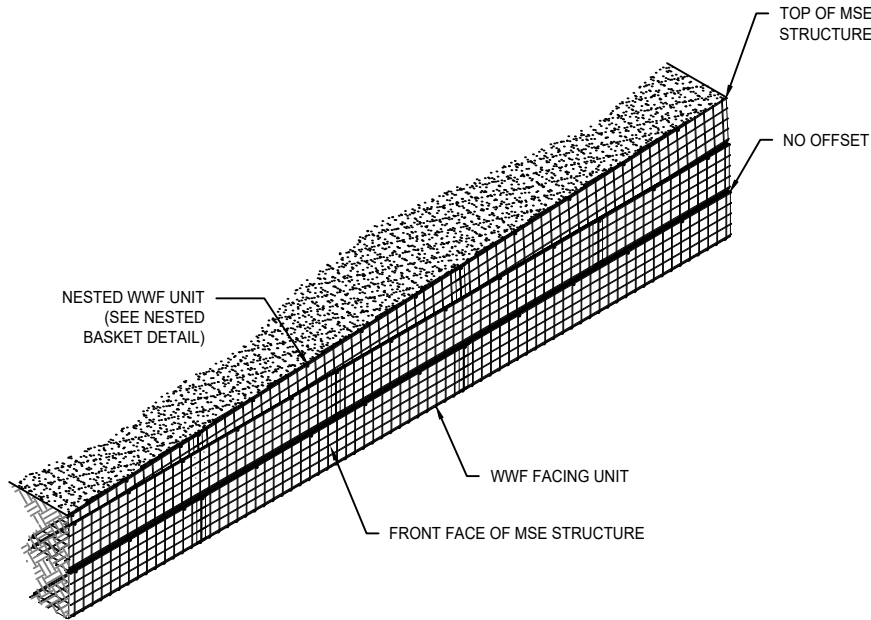


**NOTES:**

1. SEE WELDED WIRE FORM (WWF) FACING DETAIL FOR FACING MATERIALS AND DIMENSIONS.
2. SET TOPMOST WWF FACING UNIT INSIDE WWF FACING UNIT BELOW TO FOLLOW GRADE.
3. HORIZONTAL WIRES OF TOPMOST WWF FACING UNIT MAY BE CUT TO ALLOW INSTALLATION OVER STRUTS OF WWF FACING UNIT BELOW.

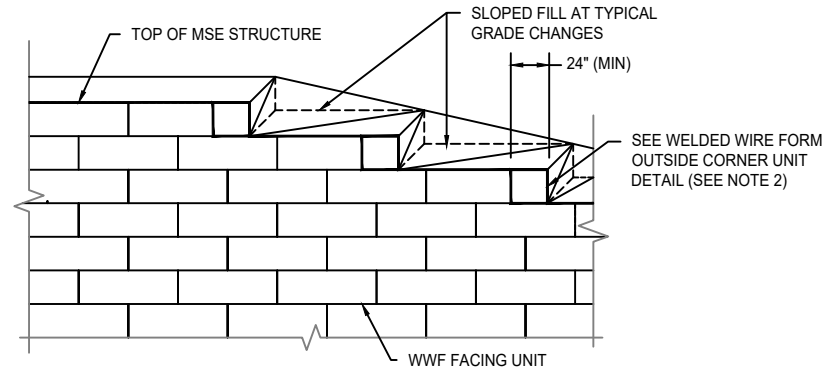
**NESTED BASKET DETAIL (NO OFFSET)**

NOT TO SCALE



**ISOMETRIC VIEW - NESTED BASKET AT TOP OF MSE STRUCTURE DETAIL (NO OFFSET)**

NOT TO SCALE



**NOTES:**

1. SEE WELDED WIRE FORM (WWF) FACING DETAIL AND WWF OUTSIDE CORNER UNIT DETAIL FOR FACING MATERIALS AND DIMENSIONS.
2. BEND BASKET 90° PER OUTSIDE CORNER UNIT DETAIL AT STEPS TO ENSURE REINFORCED FILL IS CONTAINED.

**TOP OF MSE STRUCTURE FINISHING DETAIL (NO OFFSET)**

NOT TO SCALE

**Tensar.**

Tensar International Corporation  
2500 Northwinds Parkway | Suite 500  
Alpharetta, Georgia 30009 | 770-344-2090

THIS DESIGN IS BASED UPON SPECIFIC PROPERTIES OF THOSE SPECIFIC TENSAR PRODUCTS INCORPORATED THEREIN WHICH ARE PROPRIETARY TO TENSAR. ANY SUBSTITUTION OF THE SPECIFIED PRODUCTS WILL INVALIDATE THIS DESIGN. THIS DRAWING IS BEING FURNISHED FOR USE ON THIS SPECIFIC PROJECT ONLY. ANY PARTY ACCEPTING THIS DOCUMENT DOES SO IN CONFIDENCE AND AGREES THAT IT SHALL NOT BE DUPLICATED WHOLE OR IN PART, NOR DISCLOSED TO OTHERS, WITHOUT THE CONSENT OF TENSAR INTERNATIONAL CORPORATION.

© 2020, TENSAR INTERNATIONAL CORPORATION

PROJECT NAME AND LOCATION

**TIC STANDARD DETAILS**

OWNER

OWNER PROJECT No.

CLIENT

TIC PROJECT No.

DRAWN BY: O. MARTINEZ

DESIGNED BY:

CHECKED BY: R. JOHNSON

ENGINEER OF RECORD (MSE STRUCTURE ONLY):

0 06/11/20 ISSUED FOR REVIEW RJ

NO. DATE DESCRIPTION BY

**REVISION / ISSUE**

SHEET TITLE

**WWF STANDARD DETAILS**

SCALE: AS SHOWN

SHEET 6 OF