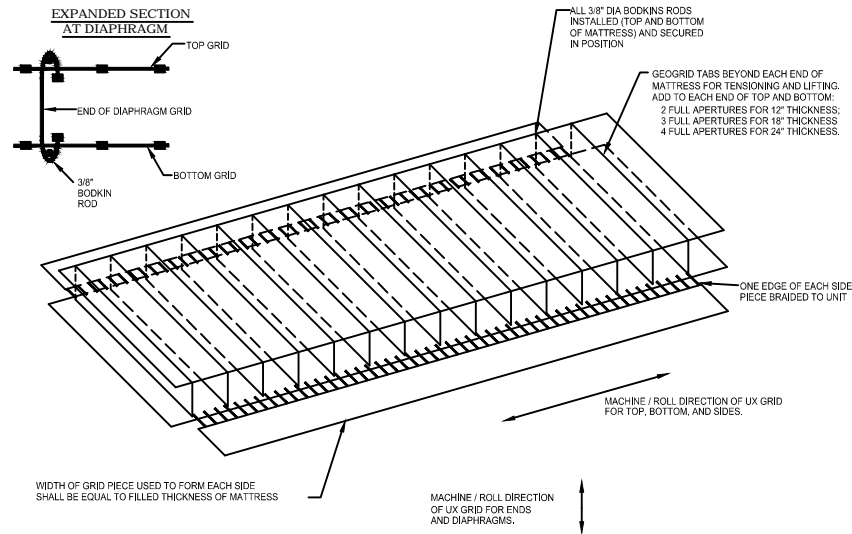


NOTE:

TYPICAL SPACING OF DIAPHRAGMS IS EVERY THREE APERTURE LENGTHS.
 A SHORTER SPACING MAY BE USED IN ORDER TO MATCH THE REQUIRED MATTRESS LENGTH.
 LENGTH OF END PIECES AND INTERNAL DIAPHRAGMS PIECES SHALL BE:
 FOR 12" (FILLED) MATTRESS THICKNESS: 2 GRID APERTURES LONG;
 FOR 18" (FILLED) MATTRESS THICKNESS: 3 GRID APERTURES LONG;
 FOR 24" (FILLED) MATTRESS THICKNESS: 4 GRID APERTURES LONG.

SEE TYPICAL CONFIGURATION OF FILLED MATTRESS FOR ADDITIONAL DIMENSIONS AND MATERIAL TYPES.



TYPICAL CONFIGURATION OF FABRICATED MATTRESS

TRITON® COASTAL & WATERWAY SYSTEMS

MKE-MATT2.DWG